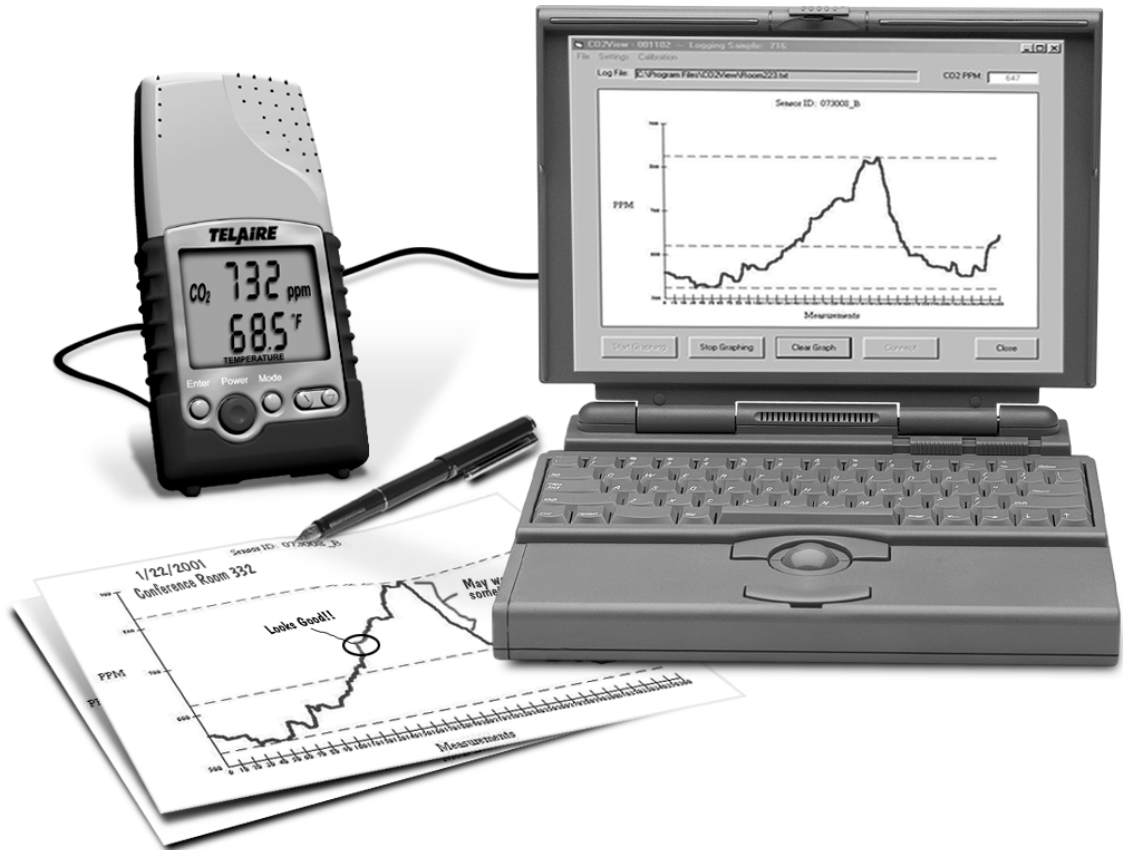


CO2 View™ Logging Software

Windows Based CO2 Logging and Graphing Software.



CO2 View™ is a Windows™ based program that allows most Telaire® CO2 sensing products to be logged directly to a PC. This easy to use program displays and graphs real-time CO2 levels at a user adjustable time interval. The program records CO2 levels in a sequential format but does not record the time of the measurement. CO2View™ allows the user to perform a zero and span calibration (gases sold separately) on the Telaire® 7001 CO2 sensor.

Applications

- Direct Datalogging to a PC from a Telaire® 7001 Hand Held Sensor
- Perform Zero and Span on Most Telaire CO2 Sensors
- Use Program to Display CO2 Readings and Trends During Meetings and Demonstrations
- Use as a Personal CO2 Monitor by Connecting to a PC at Home or Work
- Use as Evaluation Kit for Telaire's 6003 OEM Module

Specifications

Software Compatibility:

Win 95, Win 98, Win 2000

Product Supporting:

Telaire® 7001, all 8000 Series Products,
6003 Module

Functionality:

- Log and Graph CO₂ Levels (Sequential Record, No Time Stamp)
- Store Logged Files To a .TXT format for use with other programs
- Perform Zero and Span Calibration On Telaire's 8000, 7001 and 6000 series sensors.

Installed Size:

< 5 MB

Connection Port:

PC RS-232 Port, Telaire® Product RJ45 Connector (Cable P/N 62285 available)

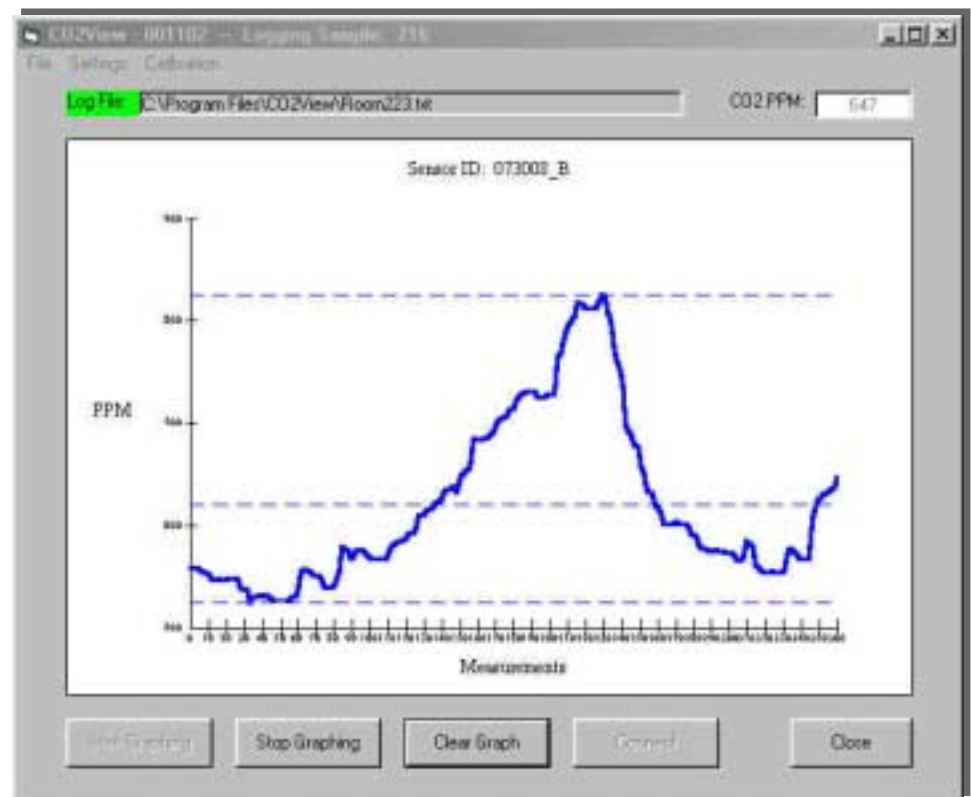
62285 Connection Cable:

Telaire® Part No. 62285

Graphing Adjustments:

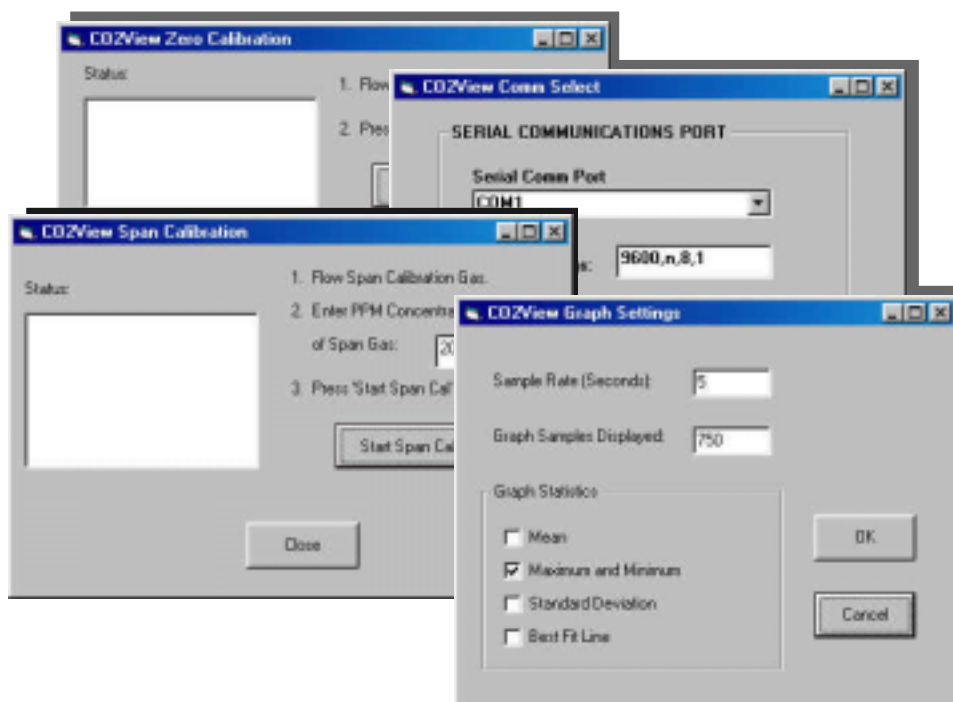
- Sample Time Interval
- Number Of Measurements Displayed
- Display Maximum/Minimum
- Display Mean
- Display Standard Deviation
- Display Best Fit Line

Sample of the Display During "Real-time" Graphing



CO₂View Instructions:

1. Install program by double-clicking on the "setup.exe" file located on the disks/CD.
2. Turn on the Telaire® 7001 CO₂ Sensor
3. Plug the RJ-45 connector (on cable 62285) into the back of the Telaire® 7001.
4. Connect the opposite end of the cable to an RS-232 port on a PC Computer.
5. Start the program by double-clicking on the "CO₂View" icon.
6. In the "Settings" menu, select "Comm Port" to select the appropriate Com Port.
7. On the Main Screen, press the "Connect" button so the CO₂View program will recognize the CO₂ sensor.
8. Select "Graphing" from "Setting Menu" and set Graphing Interval and Display Options.
9. Press "Start Graphing" on Main Screen.
10. Press "Stop Graphing" to stop graphing.
11. To print, select the "Print" command from the File Menu.



TELAIRE®

6489 Calle Real Goleta, CA 93117
805.964.1699 FAX 805.964.2129
www.telaire.com

It is our intention to keep the product information current and accurate. We can not cover specific applications or anticipate all requirements. All specifications are subject to change without notice. For more information or questions relative to this Specification Sheet, contact Telaire.

©Copyright 1998-2000 Telaire

Covered by United States Patents:
5,060,508 and 5,163,332